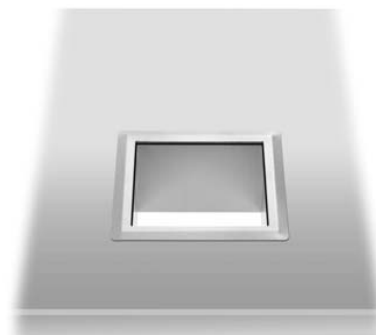


# WASTE DISPOSAL FRAME WP145



170 x 100 x 170 mm

- Waste disposal frame in robust, germ-reducing and easy-care stainless steel (AISI 304).
- All-stainless steel construction; visible surfaces satin finished and brushed.  
Further available surfaces: see below.
- Mounting: Insert and glue into cutout.
- Installation dimensions: 150 x 130 mm
- Weight, including single package: 0.7 kg

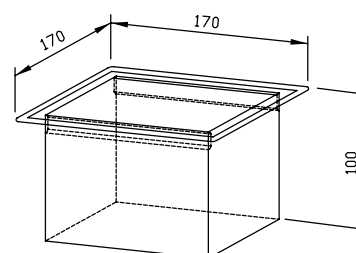


## Suggested text for specifications:

Waste disposal frame in stainless steel (AISI 304) for counter mounting. All-stainless steel construction; visible surfaces satin finished and brushed.

Dimensions: 170 x 100 x 170 mm

Article No. WP145



Available surfaces	ID No.
satin finished (standard)	727 145
highly polished	731 145
(coloured) plastic powder-coating	729 145

## Ernst Wagner GmbH & Co. KG

Ernst-Abbe-Straße 21 · D-72770 Reutlingen · Tel.: +49712151539-0 · Fax: -20  
info@wagner-ewar.de · www.wagner-ewar.de

WAGNER  
E W A R